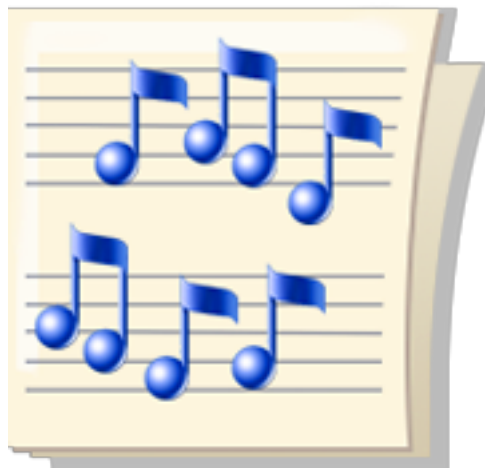


Sierramont Middle School

Orchestra Handbook

2019-2020



Lauren White, Instrumental Music Director
<http://sierramont.berryessa.k12.ca.us/> > Activities > Band and Orchestra

Monday, August 19, 2019

Hello, Music Parents!

Welcome to another great year at Sierramont, and thank you for enrolling your student in our music program. In this handbook, you will find answers to commonly asked questions, as well as my grading procedures and expectations.

If you are new to the program, let me tell you a little about myself. I was born and raised near Phoenix, Arizona. I graduated from Northern Arizona University in December of 2006, with my Bachelor's degree in Instrumental Music Education. In 2011, I graduated from the American Band College of Sam Houston State University with my Master's of Music in Instrumental Conducting. My main instrument is euphonium. My musical background is somewhat diverse. I began playing piano at age 6, flute at age 11, and euphonium at age 17. My college training included learning every instrument. 2007-2008 was my first school year at Sierramont, and I am *extremely* honored to be back for another year!

Please read through this handbook thoroughly and sign the agreement by Tuesday, August 27.

No student will be allowed to play an instrument until all August 27 paperwork is turned in.

The sooner we have a "balanced instrumentation," and the sooner I get all paperwork, the sooner classes can begin playing!

E-mail is a great way for me to send updates and to keep in touch with parents, so please make sure your email address is up-to-date in our school's records. I also use Infinite Campus for grading all assignments and performances, so please sign up for an account.

Feel free to contact me at anytime! I enjoy hearing comments and suggestions throughout the year. I am most easily reached by email: lwhite@busd.net , or you may call me at 408-923-1800 x4833.

Thank you so much, and I am looking forward to another excellent year!

Sincerely,

Lauren White

CLASS DESCRIPTIONS

INTERMEDIATE ORCHESTRA

Instrument Choices: violin, viola, cello, bass (pictured in order below)

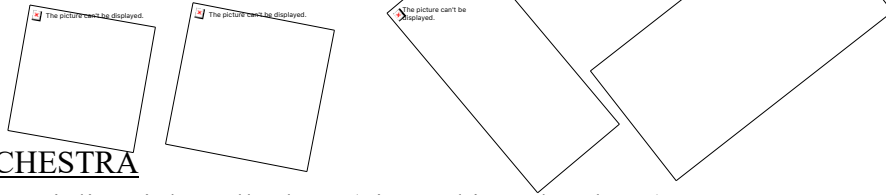
Financial Responsibilities: “Strictly Strings” Book 2, from a local music store or Amazon: \$6.99

- Purchase of a Sierramont Music Polo Shirt, \$18.00, and Music T-Shirt, \$12.00
- Donation to the Berryessa Music Boosters, Inc.: \$120.00 per year
- Instrument rental at your local music store: \$25 - \$50 per month

If unable to purchase, students may borrow items from Sierramont for free.

If you played the violin, viola, cello, or bass in elementary school, then this is the class for you!

It consists of all grades, sixth, seventh, and eighth. If you would like to play violin, you must audition to guarantee a spot. If you can read music but also want to learn a string instrument, then you may join intermediate orchestra on viola, cello, or bass.



ADVANCED ORCHESTRA

Instrument Choices: violin, viola, cello, bass (pictured in order above)

Financial Responsibilities: “String Techniques for Superior Musical Performance” Book, \$6.95

- Purchase of a Sierramont Music Shirt: \$18.00
- Donation to the Berryessa Music Boosters, Inc.: \$120.00 per year
- Instrument rental at your local music store: \$25 - \$50 per month
- All students use electronic tuner/metronome (Korg TM60BK, approx. \$23.00)
- All students must have a SmartMusic computer account, either at home or at school.

If unable to purchase, students may borrow items from Sierramont for free.

Advanced orchestra offers mature, accomplished players of all grade levels the chance to prepare and perform challenging literature. Students are required to participate in several performances during the school year. Many enrichment activities are offered, including possible festivals, field trips, and competitions. Advanced orchestra has the opportunity to travel to Disneyland in the spring to perform in the Disney Magic Music Days. This is not a required performance, but is highly recommended because of the valuable lessons students learn, such as responsibility, teamwork, and performance skills. Students and their families are responsible for paying Disneyland fees (usually about \$525.00) but remember there are many fundraising opportunities available. Some past students have paid their entire Disneyland fees through fundraising! Students must have a grade of A in orchestra to attend the trip. There are extra credit opportunities available.

CLASS PLACEMENT

Every child has “musical talent” and can be a success in the Sierramont music program. A parent’s expectation should be that any student willing to put forth substantial effort and maintain a good attitude can be successful in music at Sierramont.

Student placement, particularly for returning students, depends on the maturity of the individual, as well as their performance abilities. Discrepancies in performance skills can be lessened through cooperative learning and tutoring, a willingness to work for the good of the group, and by being supportive of classmates’ efforts. These attributes are essential for any student wishing to be in our advanced performing groups. These same attributes are valued in the workplace and are important lifelong qualities. Participation in a musical ensemble is a unique learning experience for every student.

BERRYESSA MUSIC BOOSTERS

Berryessa Music Boosters, Inc., is a fundraising community group that decided to continue to provide elementary school instrumental music instruction when Berryessa Union School District discontinued the funding in 1992. Our middle school instrumental music programs couldn't function without a "feeder" program in the elementary schools. This organization funds elementary instrumental music, and provides instruments and music resources for all schools in the Berryessa Union School District. The Berryessa Music Boosters are always looking for volunteers! If you are interested in helping, please speak with your music teacher. The first meeting is September 16, at 4:30 p.m. in the district board room.

CMEA

Every year, the *Advanced* classes participate in the CMEA festival, which stands for California Music Educator's Association. This is a competitive performance that includes groups from all around the state of California. CMEA is like state testing for music. It is our chance to show the state what we've accomplished in the music department. It's the most important performance of the year. CMEA takes place in the spring on a Friday or Saturday. The date will be announced in the fall. No absences are allowed. This is a performance grade and no make-up work will be given. Attendance is absolutely mandatory.

EXTRA REHEARSALS

Throughout the year, occasional rehearsals will be held before or after school.

- Combined rehearsals: If we need to practice with the band and orchestra combined together, all participating students are expected to attend. Date will be announced at least two weeks in advance. *Rehearsals may be considered part of the student's grade.* Students who do not attend combined rehearsals may not participate in the concert performance.
- Sectionals: All music students will have sectionals after school. Your section will determine a day everyone can attend. Each student will be required to attend 1-2 sectionals per year.
- Supplemental rehearsals: If the director decides a supplemental rehearsal is needed, all students are expected to attend. Date will be announced at least two weeks in advance. Supplemental rehearsals are usually held before or after school.

FUNDRAISING

Most field trips, and all extracurricular activities, are paid for by students' families or through fundraising activities. Music students will be involved in approximately two fundraisers per year. If you do not wish your child to be involved in fundraising, that's okay. However, as a secondary option to fundraising, please consider making a donation to the Sierramont music department.

MUSIC COUNCIL

The Sierramont Music Council is a student-run organization that focuses on improving the music program throughout the year. Music council officers act as representatives of their peers, share ideas and suggestions with the director, and can create committees to help with projects. Each officer will also conduct the class occasionally. There are three officers in each class: historian, secretary, and librarian. Positions are now open, and voting will take place within the first month of the school year. There will be approximately 5-6 meetings per year, held once a month on Thursdays from 1:15-2:00 (additional meetings if necessary). Only officers may attend meetings. Meeting dates will be announced at least a week in advance.

Historian: takes pictures throughout the year, prepares slideshows for concerts and events, creates collages for the classroom.

Secretary: helps with office work, paperwork, and classroom organization, has computer responsibilities, takes daily attendance.

Librarian: is in charge of the music library, helps create sightreading folders, passes out new music throughout the year, makes copies occasionally.

PARENT INVOLVEMENT

Family and community members are always needed in the music program, either as tutors, chaperones for field trips, or treasurers for our fundraisers, etc. Please indicate on the “Parent Handbook Agreement” if you can help out in any way. The students and staff at Sierramont appreciate the time and energy spent by volunteers at our school.

PERFORMANCES AND EVENING COMMITMENTS (MANDATORY)

Performing is an integral part of instruction for musical groups, and is the reason we rehearse every day at school. A required performance is the grading equivalent of a final exam in an academic core class. An unexcused absence from a required performance will result in a grade of “zero” for that performance. This can dramatically affect a student’s overall grade. To be considered for an excused absence due to extreme family emergency or illness, the situation must be explained in a parent note to the director as soon as possible. All other non-emergency excuses must be submitted *at least two weeks before the performance*. At the director’s discretion, the excused absence *might* be eligible for make-up by an equal and alternate assignment completed during the same semester as the missed performance. All major performance dates can be found in this handbook. In the event of any performance changes or additions, families will be notified as soon as possible.

PRACTICE REQUIREMENTS

Practicing is essential to becoming a successful musician. Even professional musicians practice constantly, up to four or more hours per day! “You can never practice too much!” In music class, practice time is equivalent to homework time. Students with small instruments *must* practice at home. Students with large instruments are invited to practice in the music room after school, maximum of three days per week. Large instruments are: cello, bass, tenor sax, bari sax, bass clarinet, bassoon, horn, trombone, euphonium, tuba, and percussion. The director will initial those students’ practice records every day. Students are responsible for notifying their parents on the days they would like to stay after school and practice in the classroom. Classroom will be open after school beginning September 1, and ending May 31. SmartMusic practicing and test minutes count toward the student’s weekly minutes.

Practice time requirements are:

- Turn in a monthly “practice record” signed by a parent. Practice records are due on the first of every month, or the Monday following the first of the month.
- Practice an average of 100 minutes a week, or 20 minutes each school day.
- Private lessons on your band/orchestra instrument count as practice time (If a student plays the trumpet in band and has a one-hour trumpet lesson, he/she will earn 60 minutes on their practice record)
- A student may earn extra credit for practicing more than the required amount. Double credit (200%) is the maximum for any month of practicing.
- A student may earn extra credit for taking private lessons on a second instrument (5 points for each month of lessons). Fill out an “Extra Credit Private Lessons” form each month.

SMART MUSIC

By September 13, a SmartMusic account will be required for *Advanced* band and orchestra students only. However, all students are encouraged to download SmartMusic at home! SmartMusic is computer software that can do many things, such as record playing tests, make .mp3 recordings, show fingerings for all notes, analyze mistakes, and provide an extensive library of music to practice. A computer microphone is also required. Any type of microphone is fine (such as a built-in microphone on a laptop or iPad) but SmartMusic microphones are available on the website for \$20-30. For families who do not have a computer and microphone, a school account will be provided, and students can take their tests in the classroom.

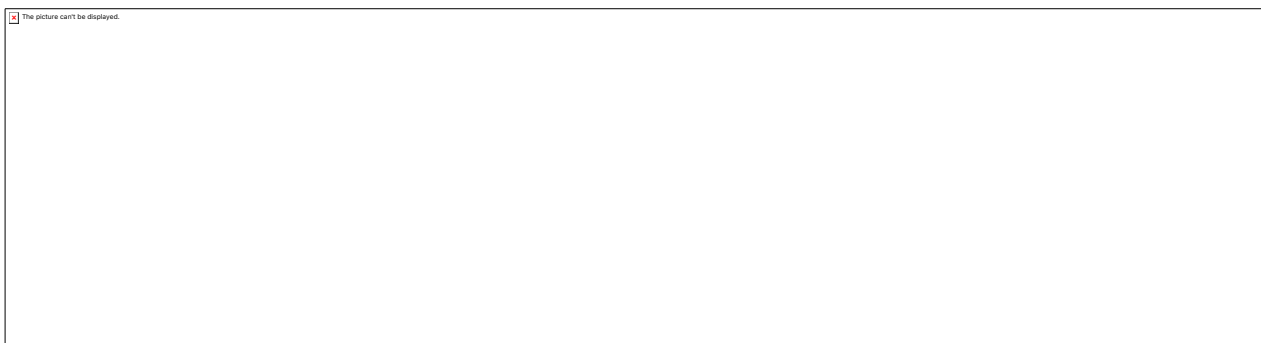
Advanced classes will need to record some playing tests with SmartMusic. This can be done at home, in the classroom after school, or during second lunch when the director is in the classroom. Recording your playing test *does* count as practice time.

T-SHIRTS

Later in the fall, each student will order a music t-shirt. The cost usually averages \$12.00. Families in need can receive financial assistance. This t-shirt is part of the dress code for some performances and field trips. More information, including a design contest, will be coming soon!

INSTRUMENT RENTAL

Sierramont does not have enough instruments for all students, which means many students **will need to rent** or use their own instrument. Below are some rent-to-own options from Music Village, a San Jose music store at 2971 Union Ave. in San Jose, 408-377-2504. They offer flexible rental terms, no minimum rental period, and no long-term obligations. All prices are monthly and include sales tax, and are applicable toward a new instrument of the same model or better. Insurance is available. Some instruments are shown below. Availability also includes bassoons, horns, baritones/ euphoniums, bass clarinets, oboes, violas, cellos, and basses.



INSTRUMENTATION

Every music class must have a balanced sound in order to be successful. This means that some students may be asked to learn a new instrument. If there are not enough volunteers to switch instruments, auditions may be needed. For example, if there are too many violins and not enough violas, cellos, and basses, only the top-scoring students may remain on violin, and the rest would be asked to play a different instrument during class.

INSURING INSTRUMENTS

Although reasonably secure instrument storage is made available to students during the day, Berryessa Union School District is not responsible for personal property brought to school. Students will be instructed in class regarding strategies for protecting instruments from loss or theft, and should bring their instruments to the music room every morning at 7:45. Each student will be assigned a spot to store their instrument, and is responsible for keeping that spot in good condition. Students are **not** encouraged to carry instruments around during the school day. Please insure instruments on a homeowner's policy. If the instrument is being rented through a local music store, please buy the coverage through the store.

MUSIC STORES	ONLINE RESOURCES
Music Village* 408-377-2504 2971 Union Ave., San Jose <i>Full range instrument rentals, books, and accessories</i>	The Woodwind and Brasswind* www.wwbw.com <i>Full selection of everything related to brass, woodwinds, percussion, and strings</i>
Allegro Music 510-793-3500 3115 Walnut Ave., Fremont <i>Excellent brass and woodwind repairs, full range of accessories</i>	Musician's Friend: www.musiciansfriend.com <i>Reasonable selection of instruments and accessories at great prices</i>
Scott Cao Violins Campbell, CA <i>Full range of string instruments</i>	Smart Music: www.smartmusic.com <i>All advanced students must have an account</i>
Kamimoto Strings* 408-298-8168 609 North 4 th Street, San Jose <i>Excellent string repairs, full range of string instruments, books, and accessories</i>	J.W. Pepper: www.jwpepper.com <i>Music books, sheet music, and audio recordings of popular band/orchestra music</i>

*Recommended

ATTENDANCE

Attendance is a very important part of creating a successful musical ensemble. Without everyone at rehearsal, the group as a whole cannot improve. This includes daily class time, *as well as occasional before and after school rehearsals*. Students will be marked tardy if:

- They are not in the classroom by the time the bell rings AND/OR
- They are not in their seats with music, a pencil, and instrument set up by the designated time (Advanced = 3 minutes after bell, Cadet/Intermediate = 4 minutes after bell).

If a student needs to leave the room for any reason, he/she must first ask for permission, then sign out, and sign back in upon return to class.

ATTENDANCE AT EVERY CONCERT IS **REQUIRED**. Concert dates are announced now, so they take priority on your calendar. To earn full credit, every student must stay to the end of the concert.

RULES

1. Be Respectful. Respect yourself, other students, teacher, classroom, and instruments. Do not touch instruments that aren't yours. Don't complain about the daily schedule.
2. Be Responsible. Be responsible for yourself only. Practice at home as needed. Always be on time and come to class prepared.
3. Give 100% Effort. Always try your best during rehearsal, so we can all improve together.

CONSEQUENCES

1. Verbal warning.
2. Loss of daily participation points. Possible written warning. Number of points lost is based on the severity of the situation (maximum of three per day). Possible after-school detention.
3. Referral or removal from class. After three written warnings, or after a severe incident, student gets a referral to the office. Possible removal from music class for the rest of the school year.

There is absolutely no food, drink, or gum allowed in the music room. Only bottled water is allowed.

Food / drink / gum discipline procedures are as follows:

First three infractions: verbal warning.

Fourth infraction: "Written Statement" assignment

Fifth infraction: music room detention after school, and parent phone call or note sent home.

REWARDS

1. High Festival Ratings. An ensemble that works well together will earn high ratings at competitions.
2. Field Trips and Concerts. Well-behaved students will earn field trips throughout the year, and will have successful concert performances.
3. Positive Reputation. Make the Sierramont Music Department known throughout the community as a top performing group!
4. Have Fun! It's fun to be in an ensemble that sounds great!

GRADING

Grades in music class are strongly based on participation. Students receive all three daily participation points if they are on their best behavior, and come prepared with a pencil, instrument, and book/music. However, concert attendance, behavior, and participation is the **LARGEST** portion of a student's grade. Grading rubric is as follows:

- Concerts – 100 points each (attendance, behavior, participation, and wearing black dress clothes) – 40%
- Participation (being prepared, well-behaved, and eager to learn) – 25% (calculated monthly)
- Tests (scale tests, performance tests, and written theory tests) – 20%
- Classwork/Homework (in-class performances, theory, 100 minutes of practice per week) – 15%

EXTRA CREDIT

Attending any upper-level (high school or higher) classical music event will earn your student five extra credit points! They are usually inexpensive and fun for the entire family. Private lessons on a second instrument are also worth five points per month. (Fill out an "Extra Credit Private Lessons" form each month.)

CLASS MATERIALS

Following is all the materials we use in music class. To make sure you purchase the correct items, bring these pages with you to the music store! Remember, learning an instrument is a lifelong investment. However, if you cannot buy/rent an item, you may borrow from the music department.

BOOKS

The Intermediate Orchestra uses the book titled "Strictly Strings" Book 2. Advanced Orchestra uses the book titled "String Techniques for Superior Musical Performance" by Robert S. Frost. This year's Advanced Orchestra book is purple. It is important that each student have their own, because we will be taking notes and practicing writing music in the books. Make sure you buy the book *for your student's specific instrument*. Please e-mail me if you have any questions about which book to buy.

The price of the book is usually \$6.99 and can be found at the following locations:

- Amazon.com. Type the book title and instrument into the search bar.
- Online at www.jwpepper.com. Type the book title into the search bar.
- Music Village at 2971 Union Ave. in San Jose. (408) 377-2504
- Kamimoto String Instruments at 609 N. Fourth St. in San Jose. (408) 298-8168

Before you go to a music store, call ahead to ensure they have your correct level and instrument. If not, please consider ordering online.

MUSIC FOLDER

Every student must have a matching Sierramont deluxe black music folder. They are durable and last for years! Each student may borrow one for the year. However, if you would like to buy a custom folder with your student's name engraved on the front, please send a check for \$25.00 to Sierramont Middle School, along with the "Music Folder Order Form."

INSTRUMENTS

Each student is responsible for acquiring and maintaining his/her instrument. There are three ways to acquire an instrument:

- Use a personal instrument
- Rent an instrument from a local music store
- Borrow an instrument from Sierramont

If your student does not have their own instrument, I recommend renting from a local music store. Their instruments are usually in very good condition, and they provide free or discounted repairs. It is a good investment. For example, at Music Village as mentioned earlier, all rental payments go toward the purchase of a new instrument.

Sierramont does have a limited number of instruments available to families who are unable to afford rental payments. These will be distributed for free, according to the family's needs. A signed loan contract is required, and families will be responsible for any loss or damage of instruments.

INSTRUMENT ACCESSORIES

Instrument	Required Accessories	Optional Accessories
Violin	Rosin Violin Strings Chin Rest Shoulder Rest Fine Tuners	Cleaning Cloth Extra Bow Peg Glue
Viola	Rosin Viola Strings Chin Rest Shoulder Rest Fine Tuners	Cleaning Cloth Peg Glue
Cello	Cello Rosin	End pin rest or “donut” Spare cello strings Peg Glue
Bass		Bass Rosin

**ALL BOOKS, INSTRUMENTS, AND ACCESSORIES MUST BE PURCHASED/
BORROWED/ORDERED BY FRIDAY, AUGUST 23. IF YOU HAVE A DELAYED
SHIPMENT, SEND A NOTE/EMAIL TO MS. WHITE. STUDENTS WILL NOT PLAY
THEIR INSTRUMENTS UNTIL ALL EQUIPMENT IS PURCHASED/BORROWED/
ORDERED, AND ALL PAPERWORK IS COMPLETE.**

OTHER MATERIALS

The following items must be purchased (or borrowed) through the Sierramont music department:

- Music polo shirt and t-shirt
- Music folder
- \$120 Berryessa Music Boosters donation

ADVANCED MATERIALS

Students enrolled in Advanced band and orchestra must also purchase (or borrow from Sierramont) the following:

- Electronic tuner and metronome (recommended: Korg TM60BK)
- SmartMusic subscription and microphone

UNIFORMS

All music students wear the same concert performance attire. It includes black dress pants and nice black shoes. Boys must wear black socks. Girls may wear either black socks or no socks. All students are required to wear a Sierramont Music shirt. The price of the shirt is \$18.00. Families facing financial difficulties may borrow a shirt from Sierramont. Students may not wear music shirts during the school day, outside of school, or at any time other than at concerts/assemblies. However, friends and family are encouraged to buy a shirt and wear it anytime to show their support for Sierramont Music!

IMPORTANT DATES

*Please write these dates in your calendar. The dates are announced far in advance, so that they will take priority if a scheduling conflict occurs. Remember, all performances are **mandatory**.*

DUE TUESDAY, AUGUST 27

- Last two pages of this handbook, including...
- Music shirt order form (for everybody who does not already have a shirt) and a \$18.00 check
Shirt form: <https://goo.gl/forms/E9bJLEC6IOSM00SF2>
- Music folder order form (for anybody who would like a personalized folder) and a \$25.00 check
Folder form: <https://goo.gl/forms/2fcpWhuijauhCPaF2>
- If you are **borrowing** an instrument from Sierramont, you must bring your rental contract

Classes who do not yet have a balanced instrumentation may have adjusted dates for the following:

All music supplies must be brought to school, including:

- Your instrument and a pencil
- Music book
- Required accessories (strings, reeds, valve oil, etc.). **Percussionists**, bring your sticks. If you are not borrowing a drum from school, be prepared to tell Ms. White where and how you'll practice.
Remember: No student will play their instrument in class until handbook agreement is turned in.

DUE MONDAY, AUGUST 26

- Berryessa Music Booster forms and one of the following options:
 1. Preferred: \$120 in a digital payment at <http://berryessamusic.wordpress.com/donate>
 2. \$120 in a check made to Berryessa Music Boosters, Inc.
 3. First payment of \$40
 4. A smaller payment that fits your family's budget, **with note or email from parent**

MUSIC DEPT. SCHEDULE

<http://sierramont.berryessa.k12.ca.us/> > Activities > Band and Orchestra

♪ = Could affect classes during the school day

DATE	TIME	EVENT
Sept 11 - Oct 2		Fall Fundraiser (Vertical Raise)
Mon, Aug. 26		Berryessa Music Booster Donation and Forms due
Tues, Aug. 27		Band / Orchestra paperwork and supplies due
Thurs, Oct. 3		SCCOE Performance at Campbell Community Center (10-12 performers, 7:10-7:20) p.m.)
Fri, Nov. 29		Deadline to purchase concert attire
♪ Nov/Dec TBA		Music Group photos in the gym
Wed, Dec. 4	6:00 p.m.	Band and Orchestra Winter Concert
Thurs, Dec. 5	6:00 p.m.	Choir Winter Concert
♪ Fri, Dec. 6	school day	Winter Concert Assemblies (wear concert attire)
Fri, January 24	7:00 p.m.	Advanced Band and Orchestra Concert at PHHS
Fri, February 7	7:00 p.m.	Concert Choir Concert at PHHS
Wed, March 4	6:00 p.m.	Band & Orchestra Spring Concert
Thurs, March 5	6:00 p.m.	Choir Spring Concert
Wed, March 11	5:30 p.m.	Disneyland Parent Meeting
♪ Fri-Sun	Mar 20-22	Disneyland! Advanced groups perform at Heritage Festival
Sat. in March	TBA	
Tues, March 24	TBA	Berryessa Band Fest. at the BYC (Advanced Band only)
Wed, March 25	6:30 p.m.	Berryessa Orch. Fest. at the BYC (Advanced Orch only)
♪ April, TBA		CMEA Festival for Advanced Band and Advanced Orchestra
April TBA	TBA	CMEA Festival for Concert Choir
April, TBA	All day	Music in the Parks at Great America (Honors Choir)
May, TBA	6:00 p.m.	District Art Show (select students perform)
Thurs, May 7	5:30-7:00 p.m.	Music Department End-of-the-Year Celebration
May, TBA	2:45-8:00 p.m.	BUSD Spring Advanced Choir Retreat at TBA
Sat, May 9	10:00-10:30 a.m.	Berryessa Arts Festival (Advanced Band performs. Select choir students perform.)
Wed, May 13	6:00 p.m.	Band and Orchestra Pops Concert
Thurs, May 14	6:00 p.m.	Choir Pops Concert
♪ Fri, May 15	school day	End of the Year Concert Assemblies (wear music t-shirt)
May, TBA	all day	Music in the Parks at Great America (select Intermediate Band/Orch students perform)
♪ May, TBA	2:30 p.m.	Cadet Band and Cadet Choir students perform at The Terraces of Los Gatos
June 4 or 5	TBA	8th gr. Promotion Ceremony (select band/choir students perform)

Please ensure you have read the handbook thoroughly. "Parent handbook agreement" form required by Tuesday, August 27.

COMPLETE FINANCIAL CHECKLIST
Hard copy due Tuesday, August 27
MAKE A COPY FOR YOUR RECORDS

Cost	Due	Who?	Item	CHOOSE ONE	OPTION
\$18	Tues. Aug. 27	All <u>new</u> music students	Music Shirt	<input type="checkbox"/> Online form: will buy shirt <input type="checkbox"/> Paper form: will buy shirt <input type="checkbox"/> Already own shirt	<input type="checkbox"/> Need to borrow a shirt because... _____ _____
\$25	Tues. Aug. 27	All Students	Music Folder (optional)	<input type="checkbox"/> Online form: will buy folder <input type="checkbox"/> Paper form: will buy folder <input type="checkbox"/> Already own	<input type="checkbox"/> Prefer to borrow a folder
varies	Tues. Aug. 27	All Students	Instrument and all instrument accessories	<input type="checkbox"/> Will bring my own instrument <input type="checkbox"/> Will rent from a local music store	<input type="checkbox"/> Need to borrow an instrument because... _____ _____ Instrument: _____
\$6.95	Tues. Aug. 27	All Students	Music book (see "Class Materials" section for book titles)	<input type="checkbox"/> Will order online (such as www.jwpepper.com) <input type="checkbox"/> Will buy at a local music store <input type="checkbox"/> Already own	<input type="checkbox"/> Need to borrow a book because... _____ _____ _____
\$120	Mon. Aug. 26	All Students	Berryessa Music Boosters Donation	<input type="checkbox"/> \$120 by August 26 online at http://berryessamusic.wordpress.com/donate <input type="checkbox"/> \$120 check by August 26 <input type="checkbox"/> Will pay \$40 each by Aug 26, Oct 1, and Nov 1	<input type="checkbox"/> Will pay smaller amount because (note to Ms. White here): _____ _____ _____
varies	Nov. 29	All Students	ALL BLACK pants, shoes, socks for boys	<input type="checkbox"/> Will provide my own	(No rental options available)
\$23.00	Tues. Aug. 27	Advanced classes only	Electronic Tuner <i>and</i> metronome	<input type="checkbox"/> Will order online (suggested: search "Korg TM60BK") <input type="checkbox"/> Will buy at a local store <input type="checkbox"/> Already own	<input type="checkbox"/> Need to borrow a tuner because... _____ _____ _____
Free	Sept. 13	Advanced classes only	SmartMusic subscription and computer /iPad / laptop microphone	<input type="checkbox"/> Will do my assignments at home	<input type="checkbox"/> Need to use classroom computer to do my assignments because ... _____ _____

**SIERRAMONT BAND AND ORCHESTRA
PARENT HANDBOOK AGREEMENT
Due Tuesday, August 27**

Student's Full Name: _____

Class (circle one): Cadet Band / Int. Band / Adv. Band / Int. Orch. / Adv. Orch

Parent #1 Name: _____

Parent Phone: (daytime) _____ (evening) _____

Parent Email Address (print clearly): _____

I am interested in being a volunteer! Please put me on the list for:

- Helping with selling food at concerts
- Instrument repair pick-up / drop-off in Fremont
- Instrument repair pick-up / drop-off in downtown San Jose
- Chaperoning (to festivals and local events)
- Chaperoning (to Disneyland, advanced classes only)
- Other: _____

Parent #2 (optional)

Name: _____

Parent Phone: (daytime) _____ (evening) _____

Parent Email Address: _____

I am interested in being a volunteer! Please put me on the list for:

- Helping with selling food at concerts
- Instrument repair pick-up / drop-off in Fremont
- Instrument repair pick-up / drop-off in downtown San Jose
- Chaperoning (to festivals and local events)
- Chaperoning (to Disneyland, advanced classes only)
- Other: _____

I give permission to use my child's picture on...

- The Sierramont Website
- YouTube
- Instagram

REQUIRED:

I indicate that I have read the Band/Orchestra Handbook online at:
<http://sierramont.berrypress.k12.ca.us/subsites/Lauren-White/>

I understand all the class requirements and outside-of-school responsibilities. I understand my student will be graded on some outside-of-school activities.

I agree to sign my student's practice record every month. I will make sure he/she practices 100 minutes per week.

Comments: _____

Student Signature: _____ Date: _____

Parent Signature: _____ Date: _____

Order Form - Sierramont Concert Shirt

Also available at: <https://goo.gl/forms/E9bJLEC6IOSM00SF2>

Forms due Tuesday, August 27. Shirts delivered November 2019.

The dress for Sierramont band/orchestra concerts includes a uniform black collared shirt. It is a nice cotton/polyester blend polo shirt, with a Sierramont Music logo on the left pocket area. All band/orchestra students are required to own the shirt. Parents, friends, and family members are also encouraged to buy a shirt... Show your support for Sierramont Music!

Shirts are \$18 each

Student Name: _____

Class (circle one): Cadet Band / Int. Band / Adv. Band / Int. Orch. / Adv. Orch

Qty.	Size	Qty.	Size	Qty.	Size
_____	Youth Med. RUNS SMALL	_____	Adult Small	_____	Adult XL
_____	Youth Large (10-12)	_____	Adult Medium	_____	Adult XXL (\$22.00)
_____	Youth X-Large (14-16)	_____	Adult Large	_____	Adult XXXL (\$22.00)

TOTAL # SHIRTS: _____ TOTAL \$ ATTACHED (checks only): _____

PLEASE DO NOT SEND CASH.

Make checks payable to Sierramont Middle School. Write student name on front of check.

We cannot afford to pay for the shirt, and would like to borrow one from the school for the year.

Parent/Guardian Name: _____ Phone: _____

----- Please cut along dotted line ✂ -----

Order Form – Personalized Music Folder (optional)

Also available at: <https://goo.gl/forms/2fcpWhuijauhCPaF2>

Forms due Tuesday, August 27. Folders delivered November 2019.

Ordering a music folder is optional. These folders are large black leatherette with brass reinforcements on the corners. The front will be engraved with “Sierramont Middle School Music Department” and the student’s name, if you choose. These folders are great, and can last for many years!

Folders are \$25 each

Student Name: _____

Class (circle one): Cadet Band / Int. Band / Adv. Band / Int. Orch. / Adv. Orch

Exact name to be engraved on the folder: _____

TOTAL # FOLDERS: _____ TOTAL \$ ATTACHED (checks only): _____

PLEASE DO NOT SEND CASH.

Make checks payable to Sierramont Middle School. Write student name on front of check.

The shirt payment and the folder payment may be combined for a total of \$43.00